

Utah Health Care Workforce Financial Assistance Program (HCWFAP)

DHHS Primary Care and Rural Health

Loan repayment success stories



Tanya Boren, NP at Uintah Basin
Clinic in Eastern Rural Utah.

"Below is a photo of a male patient who was trampled by a cow. His arm had an extensive crush injury and was blackened when I saw him. He had a classic crush injury to his arm and was started on Hyperbaric Oxygen Therapy. Within three days, there was pink color back to his arm and finger movement. His arm was saved, and his wound was completely healed within five months."



"Student loans have been difficult in trying to pay along with the needs of my family. My elderly mother also recently had a stroke and is now living with me. I am working full time and taking care of her full time. My husband works in the oil field and his job is sporadic with hours."

Tanya is very grateful to be a loan repayment recipient!

Health workforce shortages in Utah

2.7 mm

*People in Utah live
in an area with
insufficient mental
health
professionals.*

Source: [NAMI](#)

34.5%

*of Utah counties
have insufficient
access to
maternity care.*

Source: [March of Dimes](#)

43rd

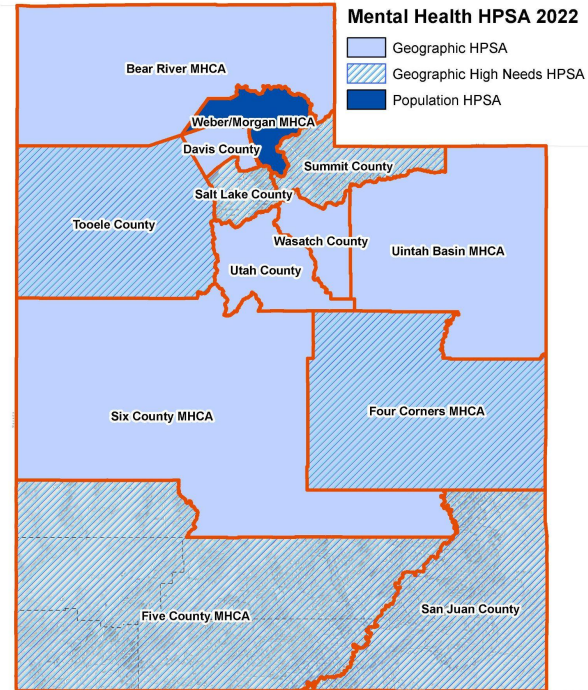
*in the nation for
rate of primary
care providers per
100,000 people.*

Source: [Value Penguin](#)

Primary Care Office

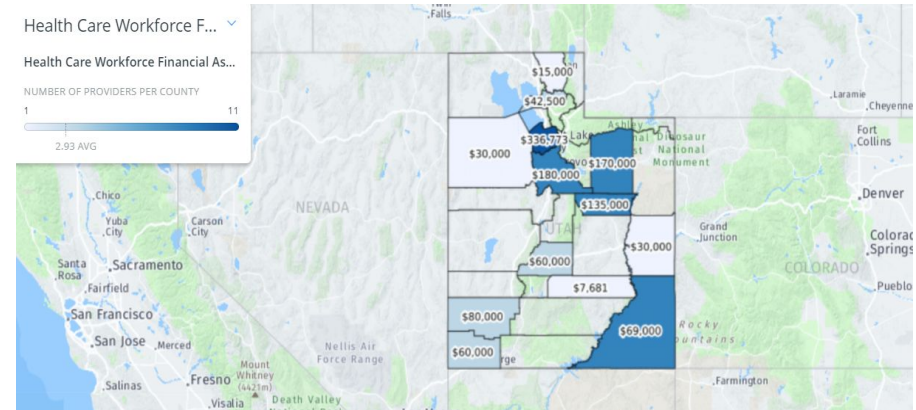
- [Health Professional Shortage Area Designations \(HPSA\)](#)
- National Health Service Corps (NHSC)
- Conrad State 30/J-1 Visa Waiver Program
- State Loan Repayment Programs
 - Rural Physicians
 - Health Care Workforce Financial Assistance

Utah's Mental Health -
Health Professional Shortage Areas



What is the HCWFAP?

- [The Health Care Workforce Financial Assistance Program \(HCWFAP\)](#) provides educational loan repayment assistance to healthcare professionals who locate and practice in underserved areas in the state of Utah.
- One-time award, three-year contract with Primary Care and Rural Health office (PCRH).
- Provider site matches 20% of total award amount.
- Application open year-round (rolling admission).



*Loan repayment amounts by county

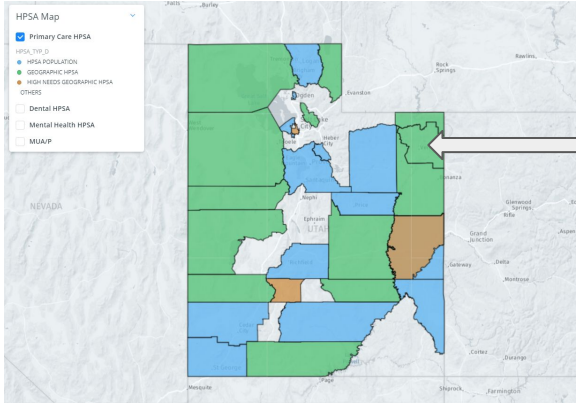
Who qualifies & award amounts

Provider Type	Award Amount*
M.D./D.O./D.D.S/PHARM	\$75,000
Psychologists/PA/APRN/FNP/CNM	\$45,000
LMFT/LCSW	\$37,500
BS/BA RN, CMHC; CSW	\$30,000
AA RN/SUDC	\$15,000
Certified Peer Specialist	\$750

*Total amount over the entire contract period

*Does not include 20% site match

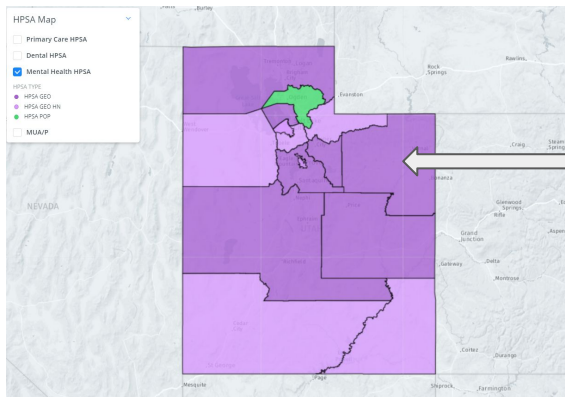
Eligible sites must:



Uintah Basin:

Primary Care
 HPSA Score:
10

1. Be located within an underserved area.
2. Match 20% of total award amount.
3. Be an approved site by PCRH or apply for approval.



Uintah Basin:

Mental Health
 HPSA Score:
18

Eligible providers must:

- Work at an approved, shortage designated job site.
- Be in no more than one loan repayment program at a time (federal or state).
- Apply within 18 months of beginning employment at an approved site.
- Work at least 20 hours per week for a part time award (cannot work less).
- Meet direct patient care requirement (no more than 8 hours spent on administrative activities for full time awards; 4 hours for part time awards).
- Be licensed in Utah and have an unrestricted license.
- Commit for three years.
- If accepted to the program, submit semiannual reports to PCRH.

3RNeT

- Job portal for rural healthcare professionals.
- 3Rs stand for “Rural, Recruiting, and Retention.”
- Free resource
- Carrie Torgerson is Utah’s 3RNeT Network Coordinator.
- Carrie’s contact information:
 - Southern Utah University
 - Phone: 435-638-7449
 - Email: torgersen@suu.edu

Healthcare employers in Utah

You’ll find jobs on 3RNeT from these types of healthcare employers in Utah:

- Critical Access Hospitals (CAHs)
- Community Health Centers (CHCs)
- Federally Qualified Health Centers (FQHCs)
- Indian Health Service sites
- National Health Service Corps Loan Repayment sites
- National Health Service Corps Scholar sites
- Private Practices

Website: <https://www.3rnet.org/Locations/Utah>

Questions?

Rachel Devine



Workforce Development Specialist

801.230.6570

rdevine@utah.gov

PCRH



*QR code to newsletter

[Ruralhealth.utah.gov](https://ruralhealth.utah.gov)

801.201.9462

opcrh@utah.gov